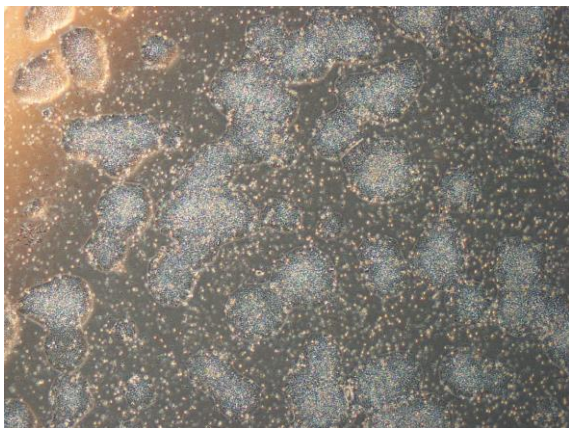
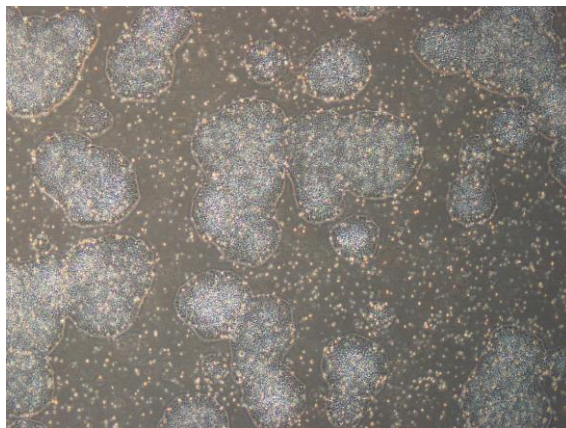


## 【 CiRA-j-1606 】 Morphology of iPSC colonies

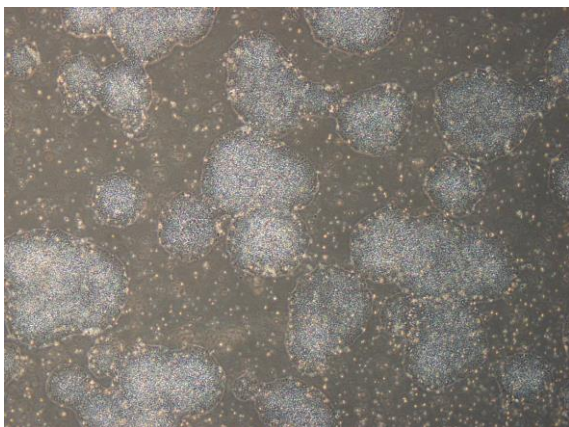
CiRA-j-1606-A: passage-3



CiRA-j-1606-B: passage-3



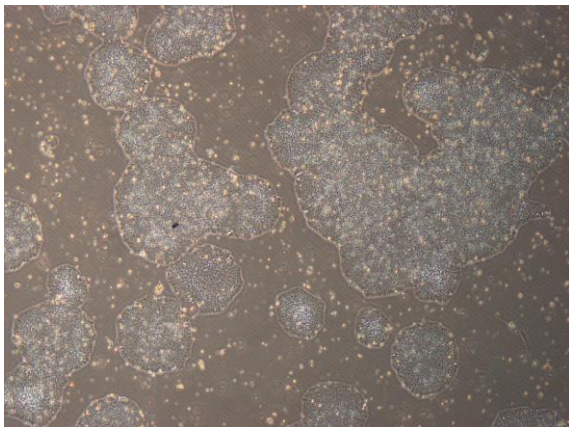
CiRA-j-1606-C: passage-3



CiRA-j-1606-D: passage-3



CiRA-j-1606-E: passage-3



CiRA-j-1606-F: passage-3

**No photo**

( All images were captured at 4x magnification )